

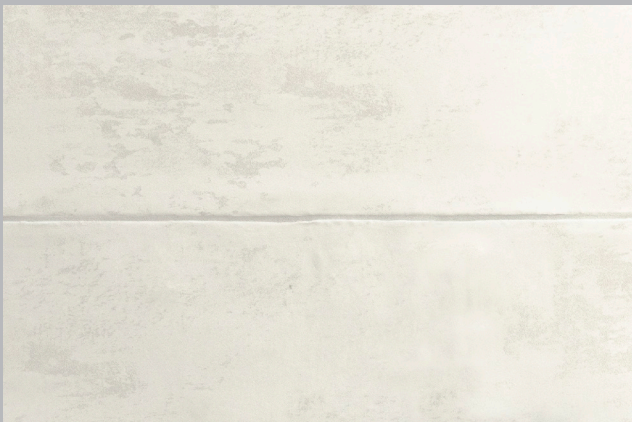
NATUCER

ALASKA

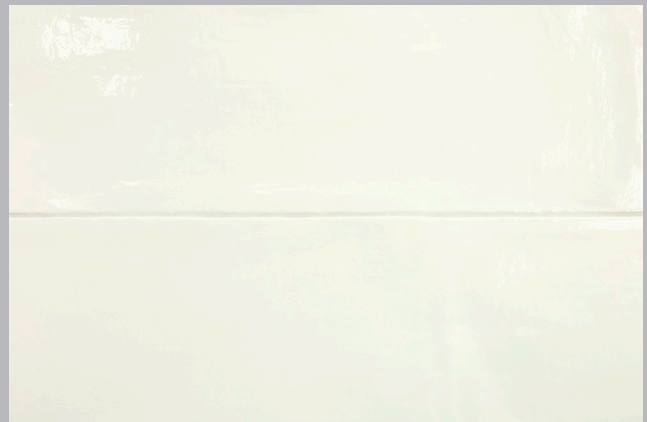


The Alaska series is an 8x24 wall tile with an intensely handcrafted look and feel. The palette is all about shades of white (glossy white, matte white, off-white and light grey) allowing the size and surface structure to become the focus.

Please note that the Alaska is not completely flat, and the edges also have rustic details which means they are uneven rather than level. This is intentional and adds to the handcrafted look. It also requires special attention during installation. Setting it straight joint will minimize the lippage. The minimum recommended grout joint is 3/32", and a larger grout joint works well with the rustic character of Alaska and will also help mitigate lippage if set with a broken joint (which should still be less than 1/3 the length).



Denali (NRAADI)



Glacier (NRAAGR)



Mist (NRAAMT)



Powder (NRAAPR)

Brochure colors are intended as a guide only and may vary from actual tile. Please check tile samples before making final selections.

Product Information

Colors

Glacier	NRAAGR	(Glossy White)
Mist	NRAAMT	(Glossy Light Grey)
Powder	NRAAPR	(Matte White)
Denali	NRAADI	(Matte White with Taupe and Grey Marks)

Size (Non-Rectified)

8 x 24 NRAA--/824

Trim

Expect variation in color and size between field and trims.

NRAA--/112SBN ½ x 12 Surface Bullnose

Usage

Alaska is a white body ceramic tile intended for interior walls.

Installation Information

Please note that the Alaska is not completely flat, and the edges also have rustic details which means they are uneven rather than level. This is intentional and adds to the handcrafted look. It also requires special attention during installation. Setting it straight joint will minimize the lippage. The minimum recommended grout joint is 3/32", and a larger grout joint works well with the rustic character of Alaska and will also help mitigate lippage if set with a broken joint (which should still be less than 1/3 the length).

Most manufacturers recommend a maximum offset of one-third (1/3) of the length of the tile on all large format tiles when setting a running bond. Because of the rustic nature of Alaska, lippage will be evident with even small offsets and will increase as the offset increases. If you plan to set Alaska broken joint please do a layout to check and confirm that your offset is acceptable and increase the size of the grout joint to mitigate lippage. Please refer to ANSI requirements for setting large format tiles, ANSI A 108.2 Section 4.3.8.

All substrates should be properly reinforced to be sure there is no movement. Wood studs need to be dry and properly braced with a minimum depth of 3-1/2". For mortar installations, the mortar bed has to be cured (less than 2% humidity) and has to have proper reinforcing.

Please note that the Alaska material must be stacked vertically when shipped (see graphic below).

