



Memorie takes us back to the artisan ceramic tradition with the historic 2.5x5 brick size and a color palette that was painstakingly studied. The colors have nuanced shade variation that is enriched by the glossy crystalline glaze. The final look creates a mood where modern design confronts a taste for the vintage aesthetic which never goes out of style. The bisque is made by multiple molds that have some irregular edges and surface imperfections, and there is intentional shading and glazed details that give the material a handmade look and feel.



Bianco Antico (SAMEBA)



Merletto (SAMEME)



Chiaro di Luna (SAMECL)

Please note that some colors in the series have more variation than others. It is important to blend well during installation to get the intended final look.

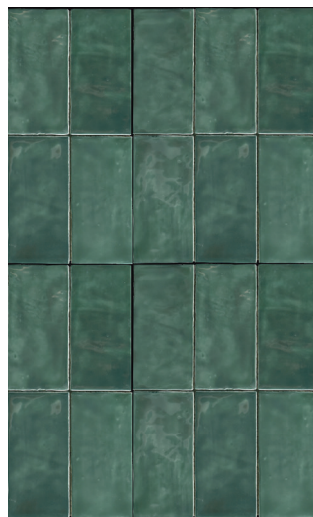
Colors are intended as a guide only and may vary from actual tile. Please check tile samples before making final selections. See reverse side for additional product information.



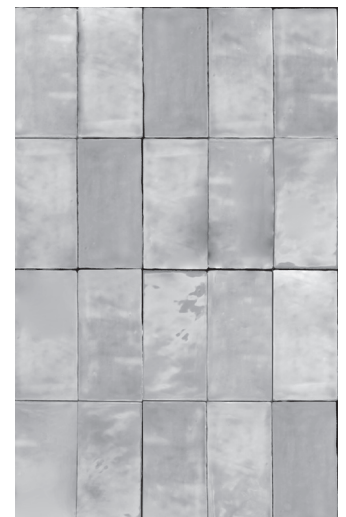
Nuvola (SAMENA)



Blu di Prussia (SAMEBP)



Muschio (SAMEMU)



Cinerino (SAMECO)

## PRODUCT INFORMATION

### Size - Non-Rectified

2 1/2 x 5 SAME--/25

Due to the nature of this special material, orders for the 2-1/2 x 5 size must be for full boxes only. Please note that we do not accept returns in general. In the rare occurrence that we make an exception and do take a return of this product, only factory sealed full boxes can be accepted.

### Colors Colors shown on the front

SAMEBA	Bianco Antico	SAMEME	Merletto
SAMEBP	Blu di Prussia	SAMEMU	Muschio
SAMECL	Chiaro di Luna	SAMENA	Nuvola
SAMECO	Cinerino		

### Coordinating Trim

Expect variation in color and size between field and trims. There is limited shade variation on the pencil bullnose; the shading is more uniform than the field tile. It is advisable to show samples to customers so that they understand what the trim looks like and decide if they find it acceptable.

SAME--/110SBN 1/2 x 10 SBN (Pencil Bullnose/Jolly)



1/2 x 10 SBN (Pencil Bullnose/Jolly) with field tile.



1/2 x 10 SBN (Pencil Bullnose/Jolly) & Profile

### Installation Information

Due to the irregular edges on this handcrafted look, the factory recommends using a minimum joint of 3/32".

Memorie is intended for interior walls. If installing with a cement-based adhesive, it is recommended to use flexible setting material that meets the ISO S1 standard (e.g. Servolight by Kiesel). All substrates should be properly reinforced to be sure there is no movement. Wood studs need to be dry and properly braced with a minimum depth of 3 1/2". For mortar installations, the mortar bed has to be cured (less than 2% humidity) and has to have proper reinforcing.

**It is important to work with the layout, blending pieces with different hues, within each carton and pulling from several cartons, to get the proper blend during installation.** Due to the different production techniques and times, expect variation in size and color between field and trim. Please note that, due to the shape of the trim piece, a bit of craquele effect may be observed on the trim pieces. This is common in crafted ceramic products, especially those with translucent glazes, and is not considered a defect.

Please note that glossy glazes are susceptible to scratching during installation as well as use. This is especially true on darker colors. Please handle the material with care. There is wax on the surface of the tile to protect it during transit and installation. It should be removed before grouting. Wetting the wax with water and letting the water sit for a few minutes before wiping will help ease removal.

